

APE

MANUFACTURING

SLAB CANISTER

Product code: APESLAB/IT

PRODUCT ADVANTAGES

- Accepts both 'mousetrap' and 'butterfly' fittings.
- Accepts most generic brands of transformers/drivers.
- Suitable for 12v & 240V halogen, LEDs, and some R80 downlights.
- Easy installation – screws directly to formwork.
- One-piece construction prevents concrete leakage.
- Angled pocket prevents transformer from slipping onto light fitting and makes replacement easy if transformer fails.
- Internal lugs to secure 'mousetrap' clips.

TECHNICAL SPECIFICATIONS

Product code: APESLAB/IT
Colour: Green
Material: Flame-retardant ABS
Dimensions: Height: 140mm
Interior diameter: 92mm
Internal pocket (w x h x l): 46mm x 57mm x 100mm
Minimum order: 10
Carton quantity: 30

INSTALLATION INSTRUCTIONS

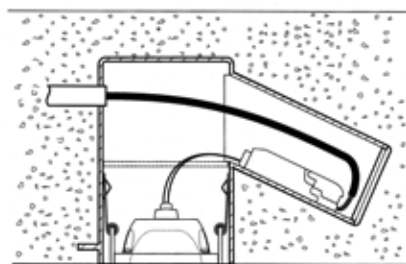
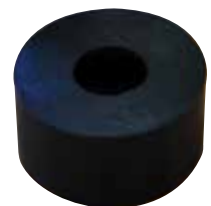
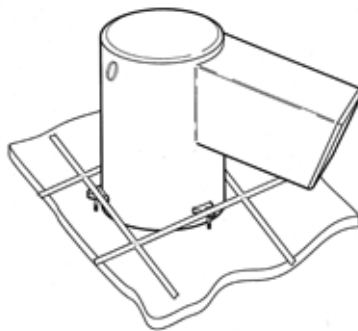
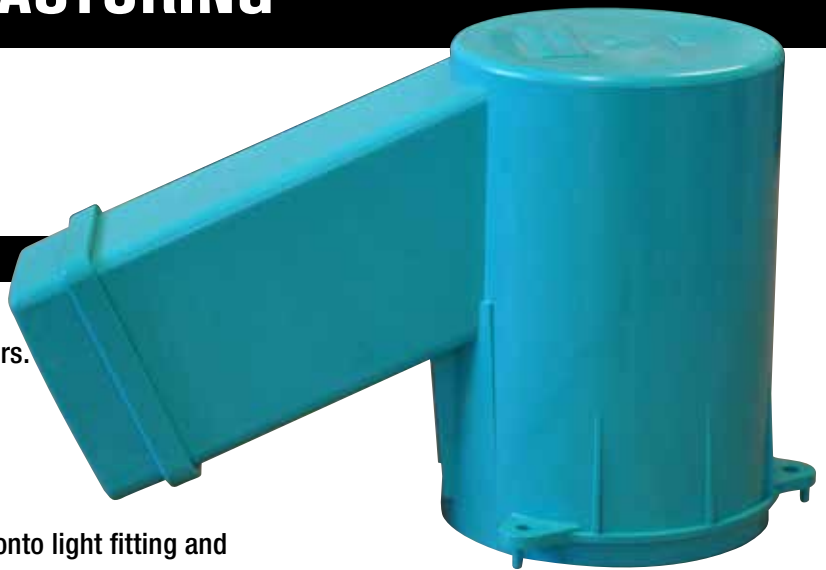
PRIOR TO CONCRETE POUR:

- Fix canister to formwork using mounting tabs.
- Install conduit.
- Tie down conduit.
- Apply PVC glue or silicone to conduit.

AFTER CONCRETE POUR:

- Remove strengthening plug.
- Connect transformer and insert into housing.
- Connect globe and fitting. If installing halogen fittings use of an aluminium-backed lamp is suggested. A heat reflector is included with the APE Slab Canister.
- Insert fitting. Units with butterfly clips simply slide into place. Units with mousetrap clips can be secured to the internal locator bosses.

Note: it is the installer's responsibility to ensure that lighting equipment used in conjunction with APE Manufacturing Slab Canisters meets appropriate standards, is correctly installed, and is compatible with APE SCs.



NOTE: strengthening plug is to remain in canister until concrete has set. This maintains the roundness of the slab canister.

APE Manufacturing
Unit 3, 27 Darlot Road, LANDSDALE, WA 6065
PO BOX 1235, WANGARA, WA 6947

Ph: (08) 6305 0681
Fax: (08) 6305 0633
Email: sales@apemanufacturing.com.au