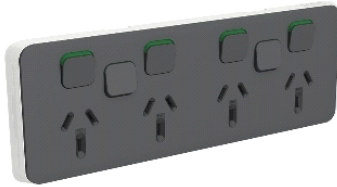


3015/4XXC-AN

Clipsal Iconic cover frame, 6 switches & 4 sockets,
10 A, horiz, anthracite



Main

Range	Clipsal Iconic
Aesthetic name	Iconic
Product or component type	Cover frame
Product destination	Switched socket

Complementary

Device mounting	Flush
Number of rocker	6
Number of power socket outlets	4
[In] rated current	10 A
Installation direction	Horizontal
Fixing mode	Clip-on
Colour tint	Anthracite (AN)
Surface finish	Matt
Surface treatment	Untreated
Type of packing	Polybag
Quantity per set	Set of 10
Ambient air temperature for operation	0...45 °C
Relative humidity	10...95 %
Material	PC (polycarbonate) for skin ABS (acrylonitrile butadiene-styrene) for skin
Height	120 mm
Width	78 mm
Depth	12 mm
Product weight	0.02 kg

Environment

Offer Sustainability

Sustainable offer status	Green Premium product
RoHS (date code: YYWW)	Compliant - since 1817 - Schneider Electric declaration of conformity
REACH	Reference not containing SVHC above the threshold
Product environmental profile	Available
Product end of life instructions	Need no specific recycling operations

The information provided in this documentation contains general descriptions and/or technical characteristics of the performance of the products contained herein. This documentation is not intended as a substitute for and is not to be used for determining suitability or reliability of these products for specific user applications. It is the duty of any such user or integrator to perform the appropriate and complete risk analysis, evaluation and testing of the products with respect to the relevant specific application or use thereof. Neither Schneider Electric Industries SAS nor any of its affiliates or subsidiaries shall be responsible or liable for misuse of the information contained herein.