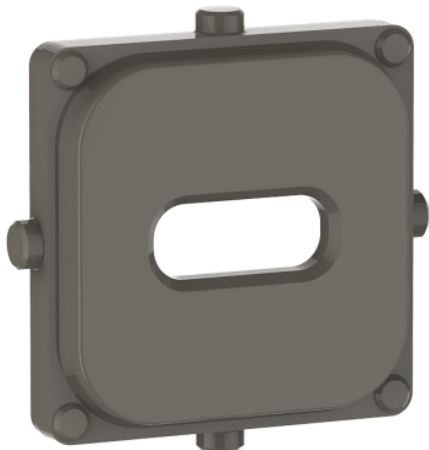


Product data sheet

Characteristics

40E1USBCCAP-AG

USB Type C, Cap, 40 Module, Ash Grey



Main

Range	Clipsal
Product or component type	Socket cap
Colour tint	Ash grey (AG)

Complementary

Product destination	USB charger
Device mounting	Flush
Connector type	USB type C
Material	ABS (acrylonitrile butadiene-styrene)
Height	20 mm
Width	20 mm
Depth	2 mm

Offer Sustainability

Sustainable offer status	Green Premium product
REACH Regulation	REACH Declaration
EU RoHS Directive	Compliant EU RoHS Declaration
Mercury free	Yes
RoHS exemption information	Yes
China RoHS Regulation	China RoHS Declaration
Environmental Disclosure	Product Environmental Profile

The information provided in this documentation contains general descriptions and/or technical characteristics of the performance of the products contained herein. This documentation is not intended as a substitute for and is not to be used for determining suitability or reliability of these products for specific user applications. It is the duty of any such user or integrator to perform the appropriate and complete risk analysis, evaluation and testing of the products with respect to the relevant specific application or use thereof. Neither Schneider Electric Industries SAS nor any of its affiliates or subsidiaries shall be responsible or liable for misuse of the information contained herein.