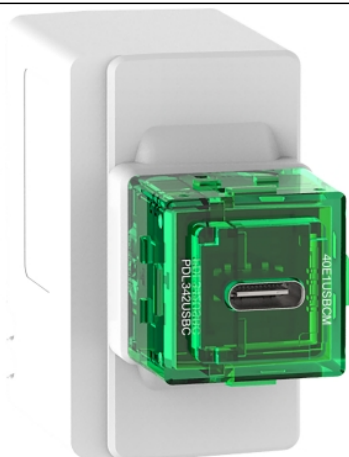


Product data sheet

Characteristics

40E1USBCM-VW

Clipsal Iconic, USB Type C, Fast charger module, 40-Series, 25W, 220-240V AC, vivid white



Main

Range	Clipsal Iconic
Product or component type	USB charger
[Ue] rated operational voltage	220/240 V AC 50 Hz
Integrated connection type	1 USB type C 5 V DC, maximum load current: 3 A 1 USB type C 9 V DC 1 USB type C 12 V DC 1 USB type C 15 V DC
Maximum load current with 2 outputs used simultaneously	3 A

Complementary

Device mounting	Flush
Device presentation	Mechanism
Colour tint	Vivid white (VW)
Surface finish	Glossy
Fixing mode	Clipped
Power consumption in W	25 W
Protection type	Thermal fuse
Height	27 mm
Width	56 mm
Embedding depth	55 mm

Environment

Product certifications	RCM
------------------------	-----

Contractual warranty

Warranty	2 years
----------	---------