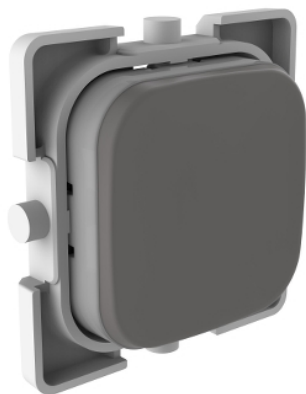


## Product data sheet

### Characteristics

# E40APB-AG

## Clipsal Iconic - cap for push-button - Iconic Essence - ash grey



### Main

Range of product	Clipsal Iconic
Aesthetic name	Iconic Essence
Product or component type	Cap
Colour	Ash grey (AG)
Type of packing	Polybag

### Complementary

Device mounting	Flush
Product destination	Push-button
Fixing mode	Clip-in
Surface finish	Matt
Height	23.0 mm
Width	23.0 mm
Depth	2.0 mm
Net weight	0.01 kg

### Environment

Ambient air temperature for operation	0...45 °C
Relative humidity	10...95 %

### Packing Units

Unit Type of Package 1	PCE
Number of Units in Package 1	1
Package 1 Weight	2.71 g
Package 1 Height	0.8 cm
Package 1 width	2.4 cm
Package 1 Length	2.4 cm
Unit Type of Package 2	CAR
Number of Units in Package 2	400
Package 2 Weight	2.126 kg
Package 2 Height	23 cm
Package 2 width	26.7 cm
Package 2 Length	34.1 cm
Unit Type of Package 3	BAG
Number of Units in Package 3	5
Package 3 Weight	16.05 g
Package 3 Height	0.8 cm

Package 3 width	9.8 cm
Package 3 Length	19 cm

## Offer Sustainability

Sustainable offer status	Green Premium product
REACH Regulation	<a href="#">REACH Declaration</a>
EU RoHS Directive	Compliant <a href="#">EU RoHS Declaration</a>
Mercury free	Yes
RoHS exemption information	<a href="#">Yes</a>
China RoHS Regulation	<a href="#">China RoHS Declaration</a>
Environmental Disclosure	<a href="#">Product Environmental Profile</a>