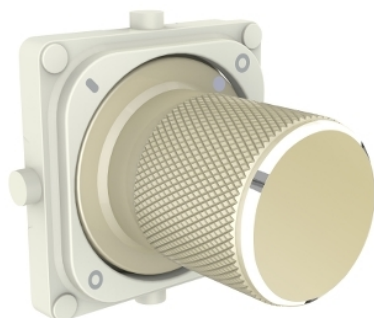


## Product data sheet

### Characteristics

# S40RSM2KB-CE

Clipsal Iconic, knob for cover frame, Iconic Styl, crowne (gold)



#### Main

Range	Clipsal Iconic
Aesthetic name	Iconic Styl
Product or component type	Knob
Colour tint	Crowne (CE)
Type of packing	Polybag
Quantity per set	Set of 5

#### Complementary

Range compatibility	knob
Product destination	Cover frame
Fixing mode	Clip-in
Surface finish	Satin
Surface treatment	Metallic
Material	Anodised aluminium: knob
Height	23.0 mm
Width	23.0 mm
Depth	9.0 mm
Net weight	0.03 kg

#### Environment

Ambient air temperature for storage	0...45 °C
Ambient air temperature for operation	0...45 °C
Relative humidity	10...95 %

#### Packing Units

Unit Type of Package 1	PCE
Number of Units in Package 1	1
Package 1 Weight	7.06 g
Package 1 Height	1.9 cm
Package 1 width	2.2 cm
Package 1 Length	2.2 cm

The information provided in this documentation contains general descriptions and/or technical characteristics of the performance of the products contained herein. This documentation is not intended as a substitute for and is not to be used for determining suitability or reliability of these products for specific user applications. It is the duty of any such user or integrator to perform the appropriate and complete risk analysis, evaluation and testing of the products with respect to the relevant specific application or use thereof. Neither Schneider Electric Industries SAS nor any of its affiliates or subsidiaries shall be responsible or liable for misuse of the information contained herein.

## Offer Sustainability

Sustainable offer status	Green Premium product
REACH Regulation	<a href="#">REACH Declaration</a>
EU RoHS Directive	Compliant <a href="#">EU RoHS Declaration</a>
Mercury free	Yes
RoHS exemption information	<a href="#">Yes</a>
China RoHS Regulation	<a href="#">China RoHS Declaration</a>
Environmental Disclosure	<a href="#">Product Environmental Profile</a>