



PLUTO 200FC - 12/24V 200W

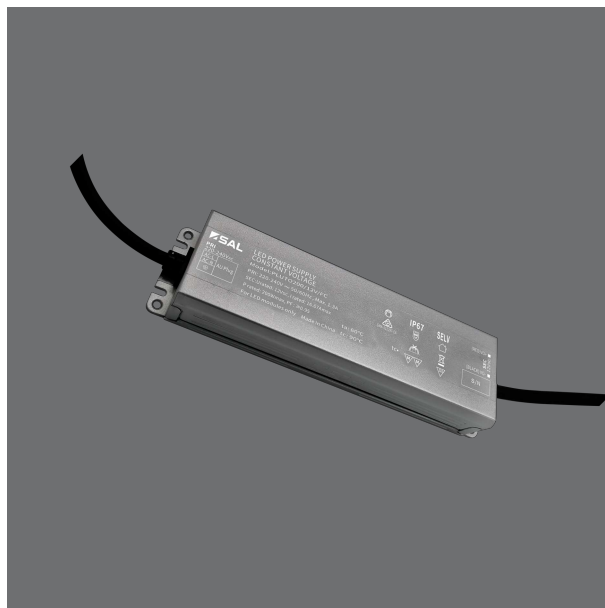
Australian approved constant voltage flickerCONTROLLED LED drivers, IP67

Application

An ideal choice for LED strips, LED Neon or inground lighting requirements

Design Specifications

- SELV and EMC compliant
- Safe no load operation, power factor 0.95, non-dimmable
- Overload and short circuit protection, flickerCONTROLLED performance
- 1.2 m flex and plug fitted for easy installation, output (secondary) end is provided with rubber fly leads
- Durable metal casing IP67
- Electrical class I, Do Not Cover, Minimum load 200/12V 1 watt, 200/24V 1 watt, Max. LED Driver Number on MCB C type 16A (for driver >100W) = 10 (12V), 15 (24V)



Performance

- Dimmable - **NO**



Technical Specification

Product	Model No.	Input Voltage (V/AC)	Frequency (Hz)	Output Voltage (V/DC)	Power (W)	Power Factor
	PLUTO 200/12V/FC	240	50	12	200	0.95
	PLUTO 200/24V/FC	240	50	24	200	0.95

Dimmable	Dim (mm)
NO	227(L) x 61(W) x 34(H)
NO	170(L) x 61(W) x 34(H)



Due to continued product and technology enhancements, data sourced from sal.net.au shall not form part of any contract and or technical performance guarantee unless expressly confirmed in writing by SAL at the time of order. Products are sold in accordance with [SAL Terms and Conditions of sale](#) and all images shown are for illustration purposes only and may vary from the actual colour or finish. Unless specifically stated, all IP ratings nominated for Interior products are from "below the ceiling".


Berkshire

White Duck W

Spanish Olive W

 **SAL**



**DID
YOU
KNOW** 

In the interest of safety and product performance, all electrical accessory components are covered by mandatory Australian and International Safety Standards. Always look out for the RCM logo on the product and if in doubt, check the compliance via your local Electrical regulator.

