

PLEASE NOTE

- The installation, maintenance and eventual replacement of this electrical equipment must only be carried out by a licensed electrician.
- This electrical equipment must not be repaired.
- All applicable local, regional and national regulations must be complied with during the installation, use, maintenance and replacement of this device.
- This product should not be installed if, when unpacking it, you observe that it is damaged.
- Clipsal cannot be held responsible in the event of noncompliance with the instructions in this document and in the documents to which it refers.
- The service instruction must be observed throughout the life time of this electrical equipment.
- The product is tested and validated to perform in compliance with AS/NZS 61439.3 with only Clipsal MAX9 and Schneider Electric Acti9 devices.

⚠ DANGER

HAZARD OF ELECTRIC SHOCK, EXPLOSION OR ARC FLASH

- Turn off all power supplying this product before working on it.
 - Use a voltage tester with a suitable rated voltage in order to check that all active conductors aren't energized.
 - Carefully inspect the work area to check that no tools or objects could have been left inside the equipment.
- Failure to follow these instructions will result in death or serious injury.

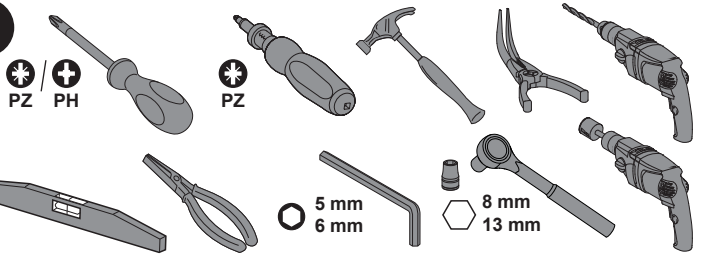
Life Is On



NOTICE

HAZARD OF EQUIPMENT DAMAGE

- Ensure IP30 ingress protection is maintained after installation.
 - Do not exceed the device's ratings for maximum limits.
- Failure to follow these instructions can result in equipment damage.



1 Unboxing

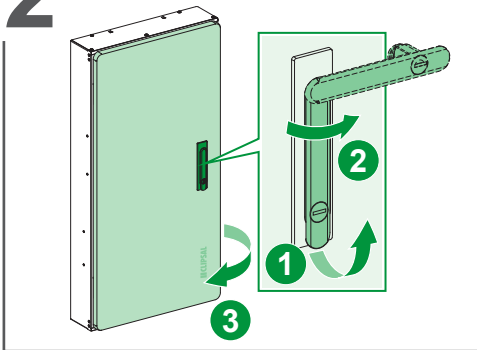
Commercial Reference Number	Pole filler (8 module)	Tooth cap	Keys	Screw M3	Screw M6	Washer M6	Screw M8	Washer M8	Drilling template	Circuit schedule
MX9DB24S160	1	24	2	2	4	4	-	-	-	1
MX9DB36S160	1	36	2	2	4	4	-	-	-	1
MX9DB48S160	2	48	2	2	4	4	-	-	-	1
MX9DB60S160	2	60	2	2	4	4	-	-	-	1
MX9DB72S160	3	72	2	2	4	4	-	-	-	1
MX9DB24S250	1	24	2	2	-	-	4	4	1	1
MX9DB36S250	1	36	2	2	-	-	4	4	1	1
MX9DB48S250	2	48	2	2	-	-	4	4	1	1
MX9DB60S250	2	60	2	2	-	-	4	4	1	1
MX9DB72S250	3	72	2	2	-	-	4	4	1	1



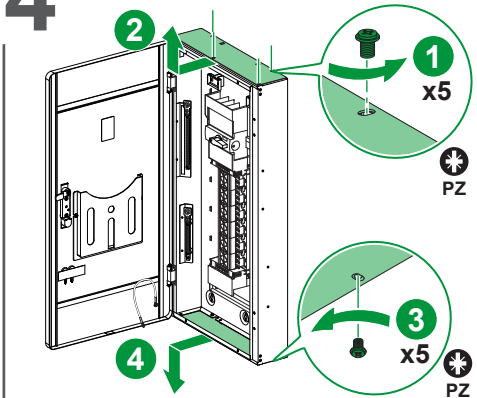
BQT2503402-00

1/8

2 Door Opening

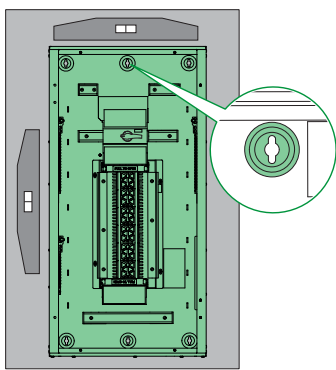


4 Gland Plate Removal

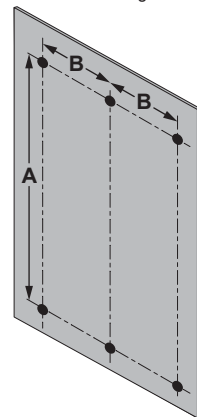


5 Distribution Board Mounting

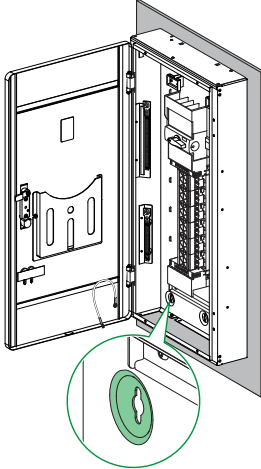
Use the center mounting hole to easily level the distribution board and mark the positions.



Drill the remaining holes.



Install the distribution board on the wall using mounting holes.



Commercial Reference Number (160/250)	A (mm)	B (mm)
MX9DB24S●●●	740	188
MX9DB36S●●●	848	188
MX9DB48S●●●	956	188
MX9DB60S●●●	1079	188
MX9DB72S●●●	1187	188

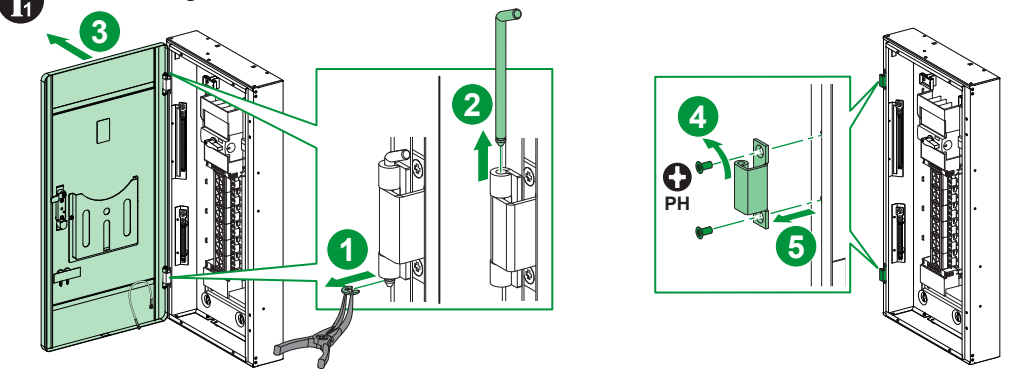
BQT2503402-00

2/8

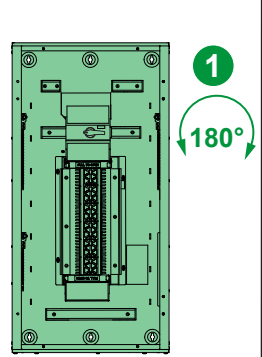
For bottom feed incomer cables, follow the steps **i₁** + **i₂** + **i₃**

To change the door swing to right hand side follow steps **i₁** + **i₄** + **i₅** + **i₃**

i₁ Door and Hinge Removal

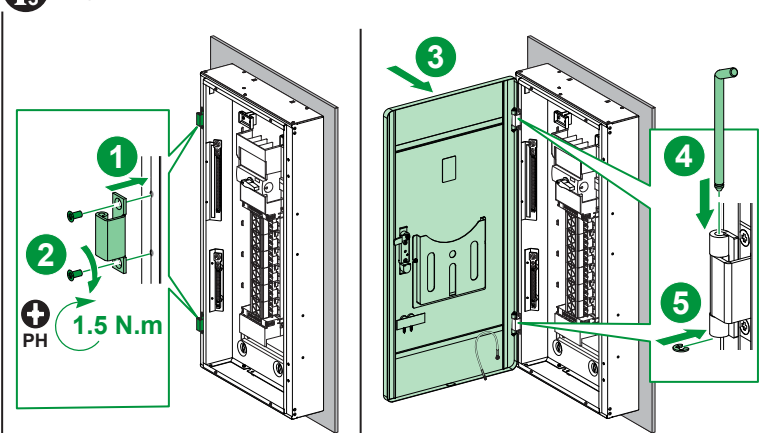


i₂ Invert Distribution Board

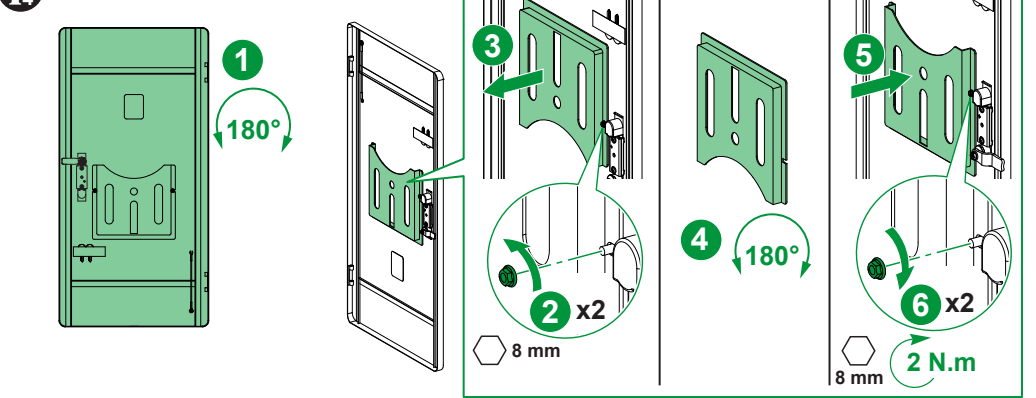


Note: Rotate 180° and install the distribution board on the wall using mounting holes.

i₃ Hinge and Door Installation



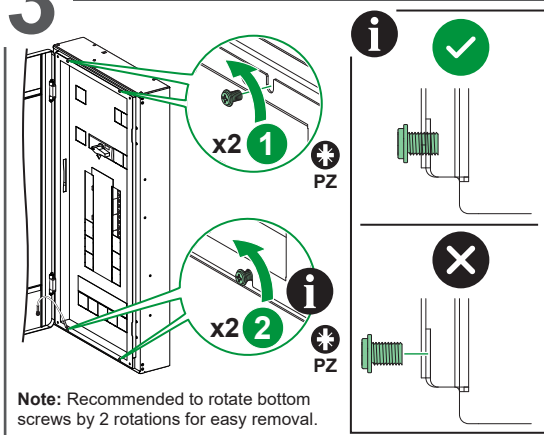
i₄ Invert Door and Circuit Schedule Holder



BQT2503402-00

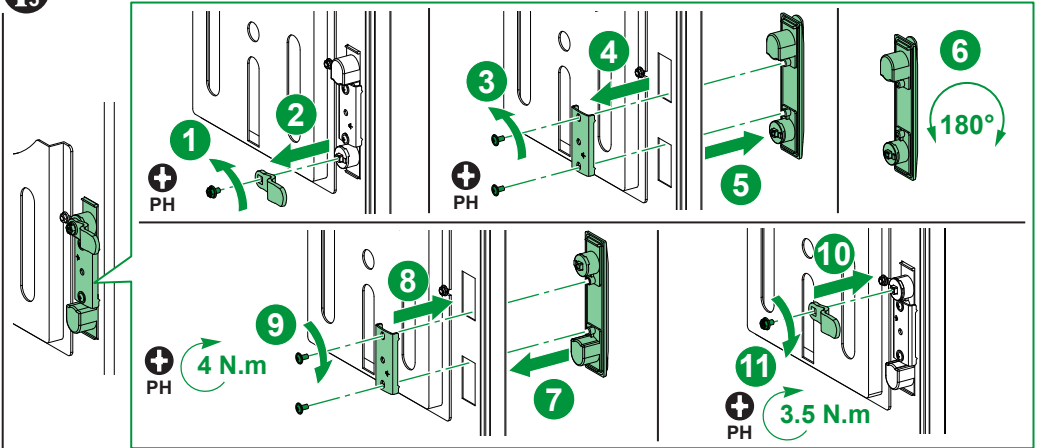
3/8

3 Escutcheon Removal

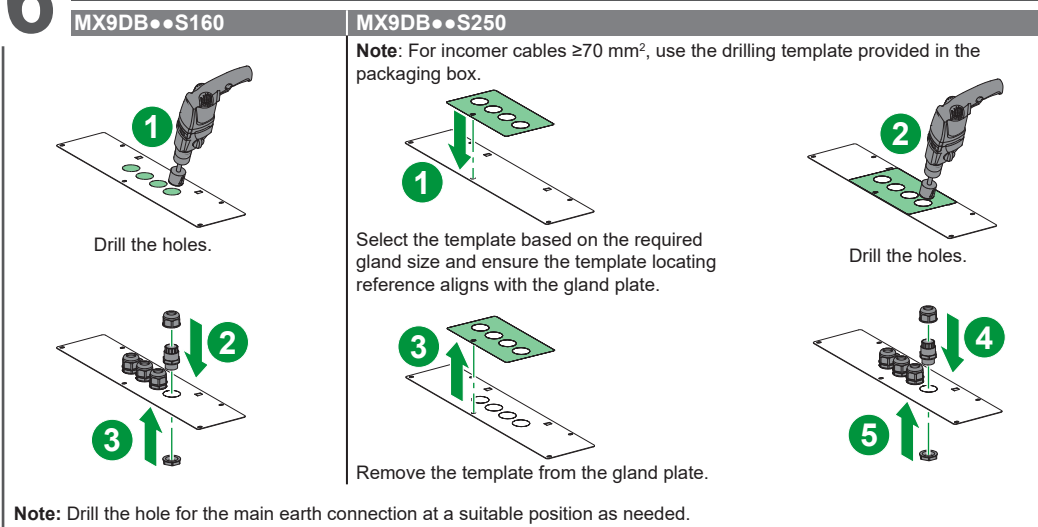


Note: Recommended to rotate bottom screws by 2 rotations for easy removal.

i₅ Invert Door Lock Assembly

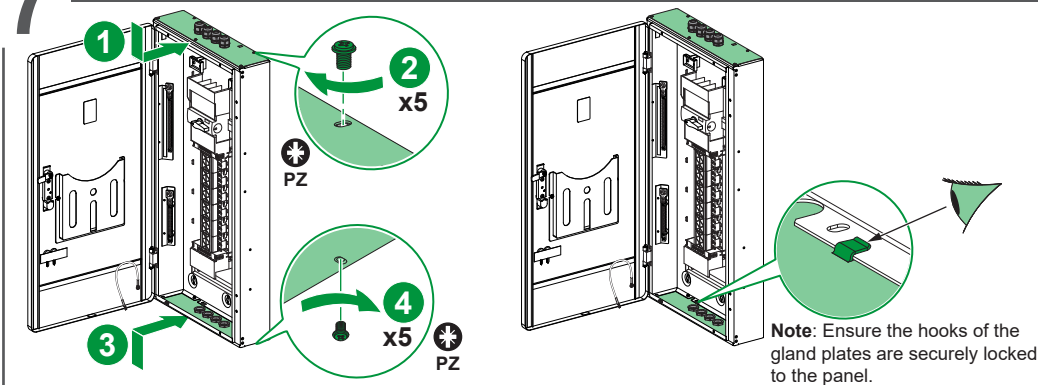


6 Drilling Holes for Incomer Cables



Note: Drill the hole for the main earth connection at a suitable position as needed.

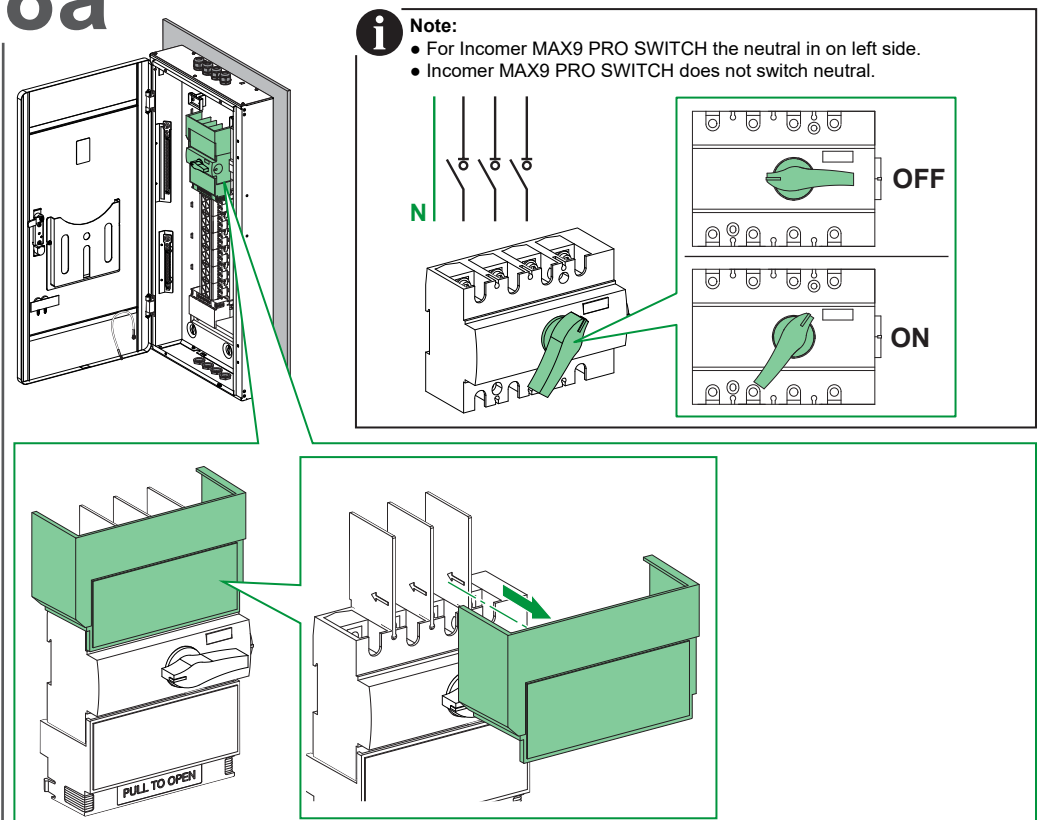
7 Gland Plate Installation With Cable Entry Provisions



BQT2503402-00

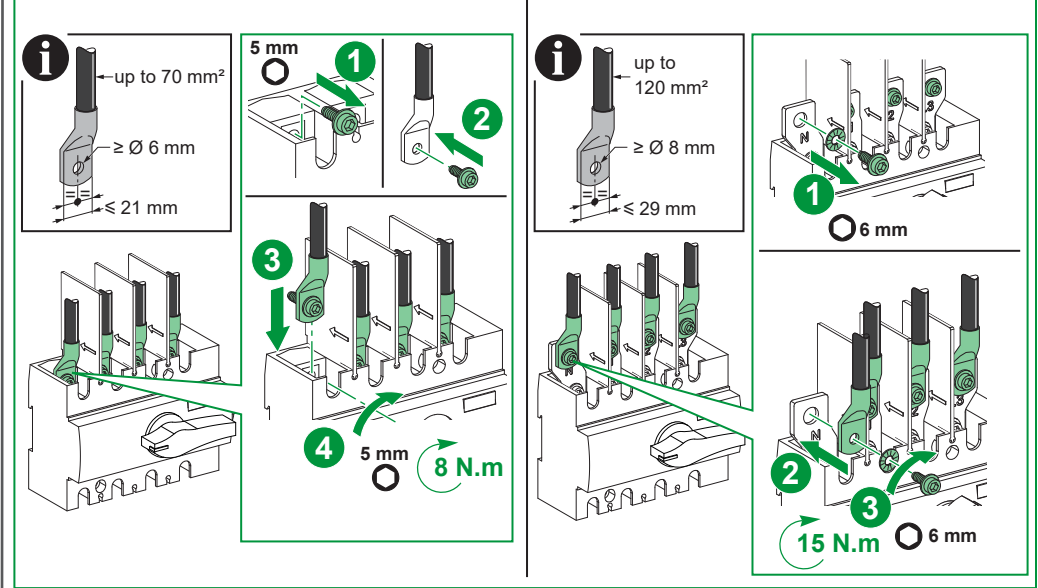
4/8

8a Incoming Phase and Neutral Connection



MX9DB●●S160

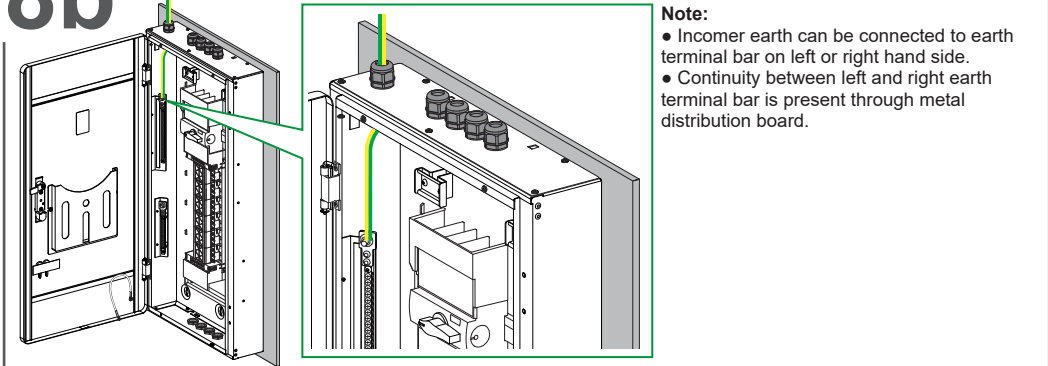
MX9DB●●S250



BQT2503402-00

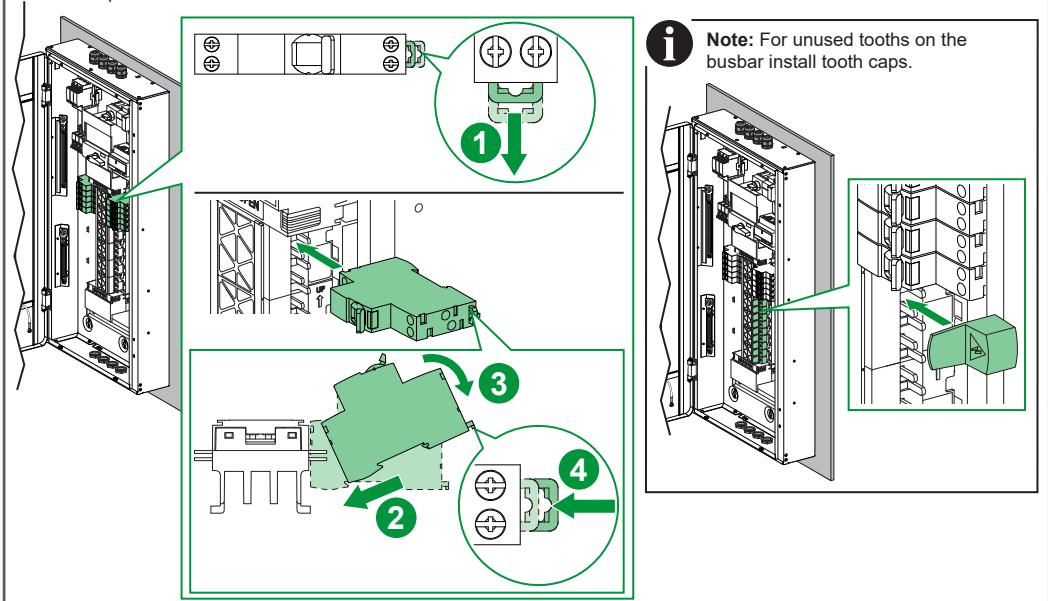
5/8

8b Incoming Earth Connection



9 Devices Installation

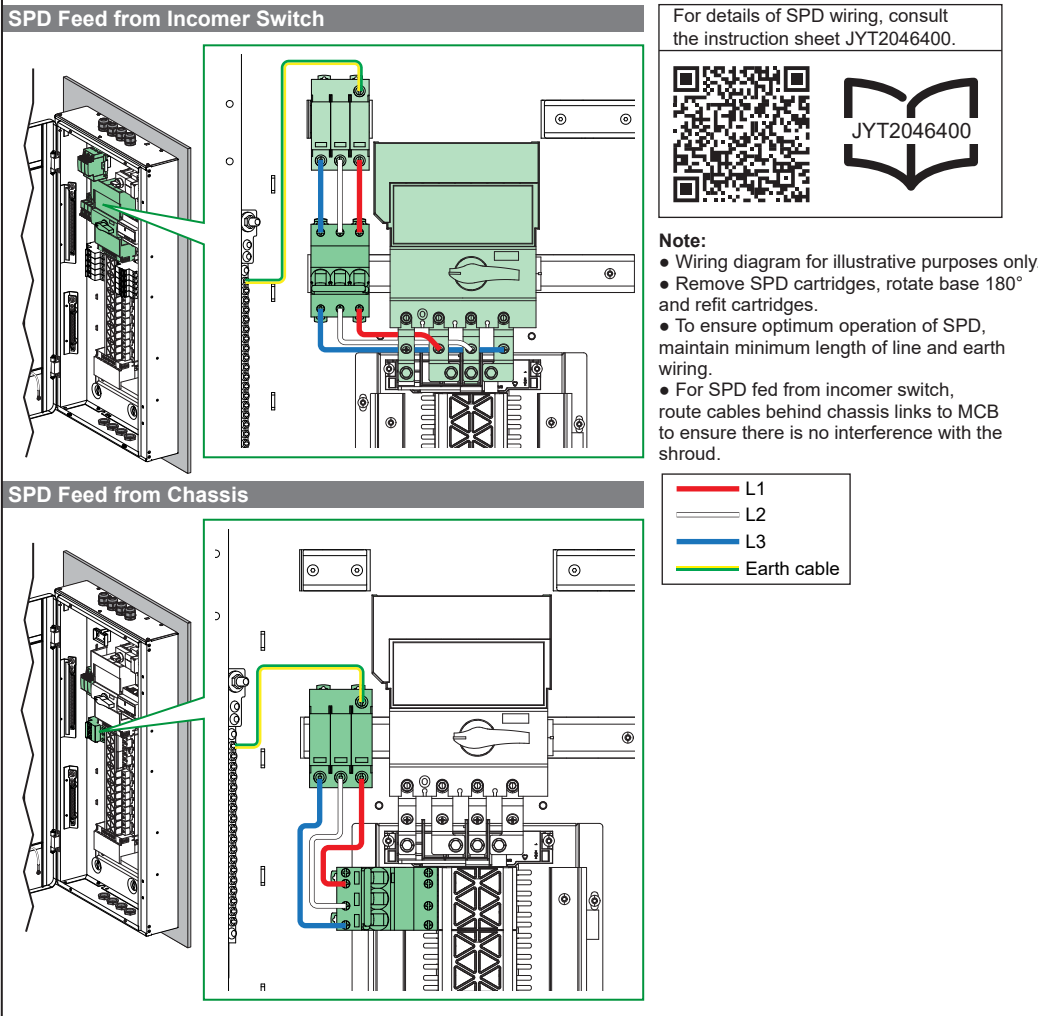
Note: Chassis compatible with MAX9 phase neutral devices only (MX9MN●●●, MX9R●●●, MX9A●●●). All other Clipsal MAX9 and Schneider Electric Acti9 devices and accessories can be mounted on DIN-rails provided at top and bottom of distribution board.



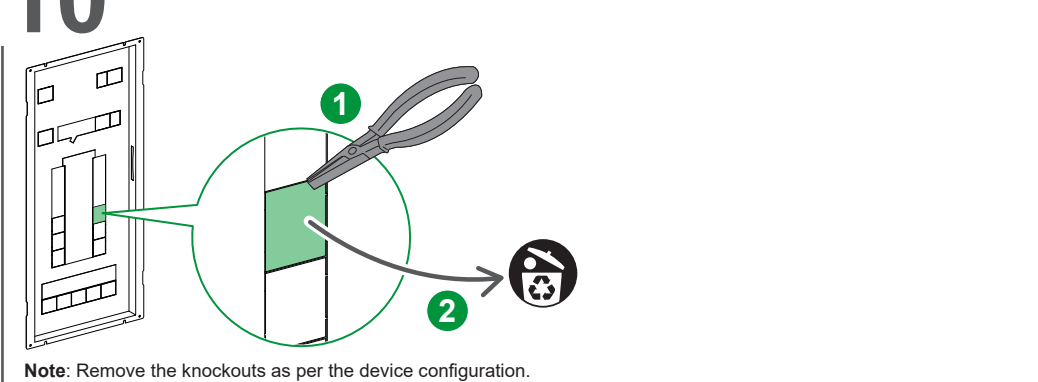
BQT2503402-00

6/8

10 SPD Wiring



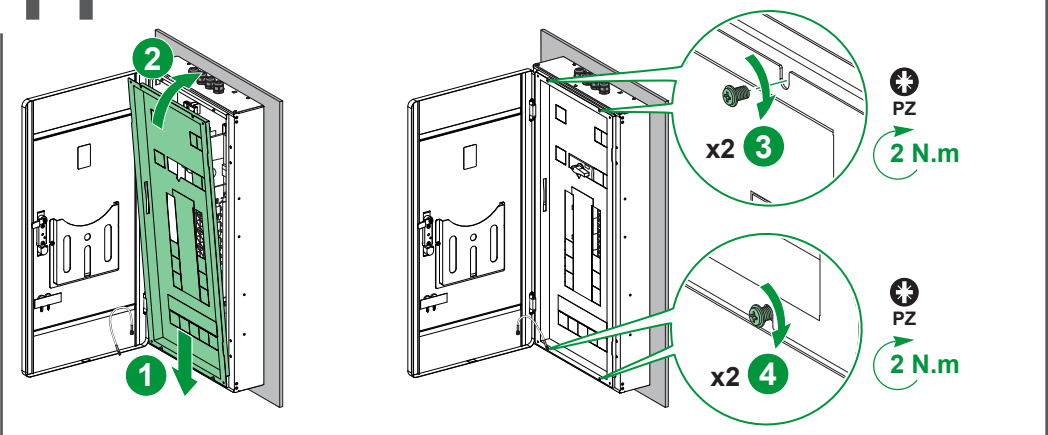
10 Escutcheon Knockouts Removal



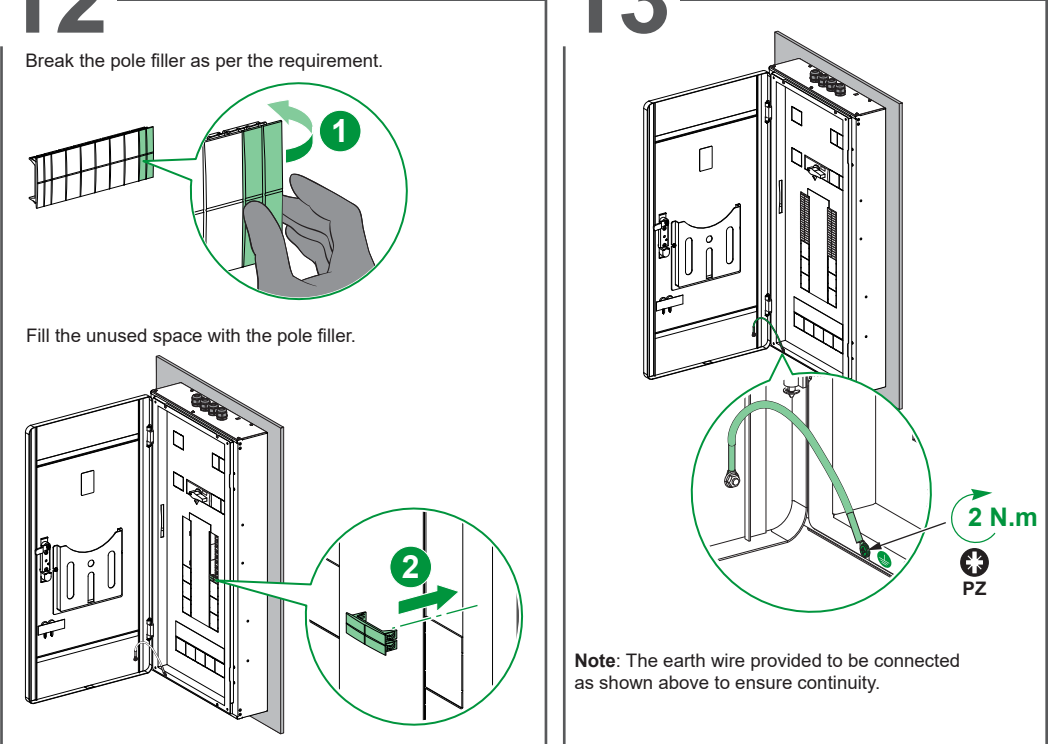
BQT2503402-00

7/8

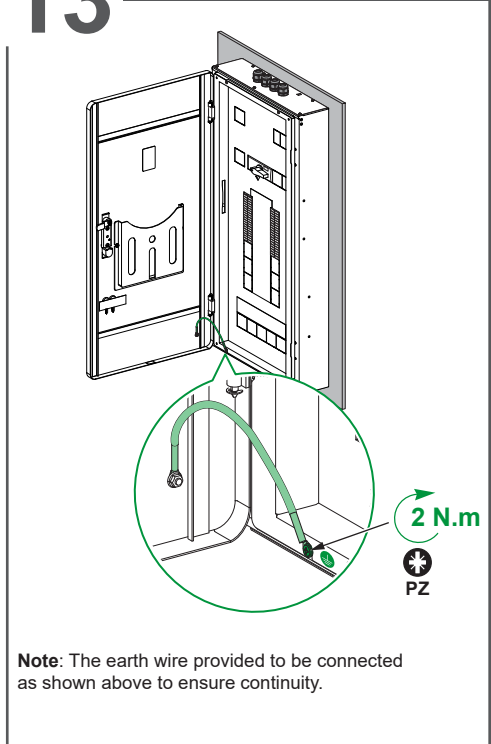
11 Escutcheon Installation



12 Pole Filler Installation



13 Earth Connection



Schneider Electric (Australia) Pty Limited

33-37 Port Wakefield Road
Gepps Cross
South Australia 5094

Customer Care Centre
Tel: 13 73 28
Email: customercare.au@se.com
www.clipsal.com

Printed on recycled paper.

© 2025 Clipsal Australia Pty Ltd - All rights reserved.
The identified trademarks and copyrights are the property of
Clipsal Australia Pty Ltd unless otherwise noted.

Life Is On **CLIPSAL**
by Schneider Electric

8/8